



# The Residences at 91 Hope

STAMFORD, CT

91 Hope



# A New Standard of Home

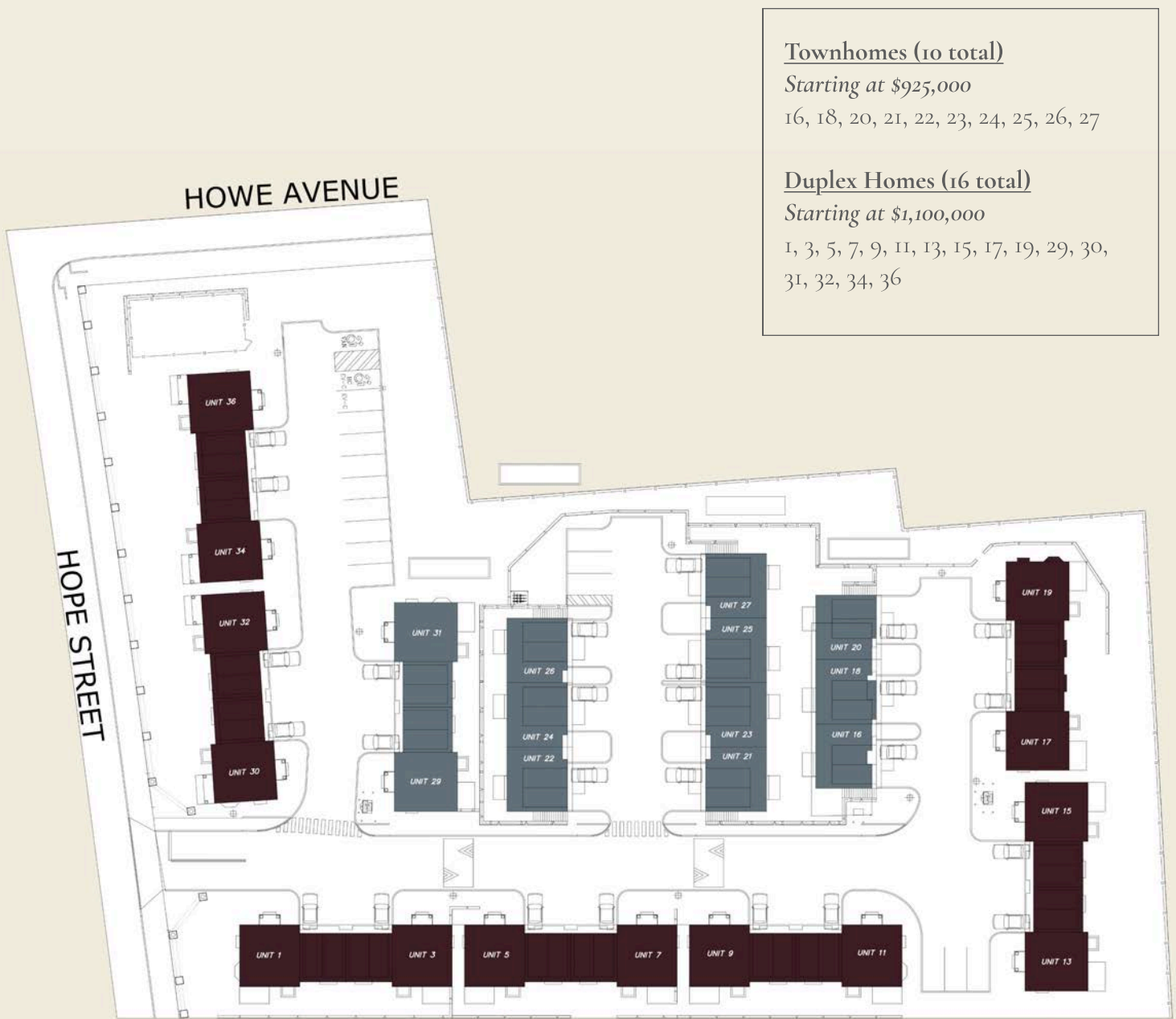
Home is evolving. Today's buyers expect spaces that support modern work, entertaining, and everyday comfort, all while within architecture that reflects traditional design. These residences set a new benchmark for living in Stamford, combining thoughtful layouts, refined materials, and a fresh architectural vision.

91 Hope

\*Floor plans are conceptual and for marketing purposes only. Dimensions and details are approximate and subject to change without notice. This property is being developed by RMS 91 Hope Street LLC. An affiliate of RMS 91 Hope Street LLC, RMS Real Estate Group LLC, is a licensed real estate broker. Equal Housing Opportunity. 

# Site Plan

91 Hope



Townhomes (10 total)

Starting at \$925,000

16, 18, 20, 21, 22, 23, 24, 25, 26, 27

Duplex Homes (16 total)

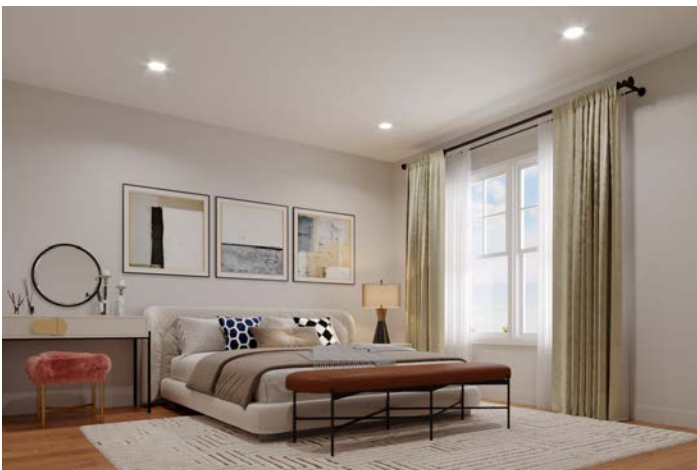
Starting at \$1,100,000

1, 3, 5, 7, 9, 11, 13, 15, 17, 19, 29, 30,  
31, 32, 34, 36

\*Floor plans are conceptual and for marketing purposes only. Dimensions and details are approximate and subject to change without notice.  
This property is being developed by RMS 91 Hope Street LLC. An affiliate of RMS 91 Hope Street LLC, RMS Real Estate Group LLC, is a licensed real estate broker. Equal Housing Opportunity. 🏠

# Duplex Interiors

91 Hope

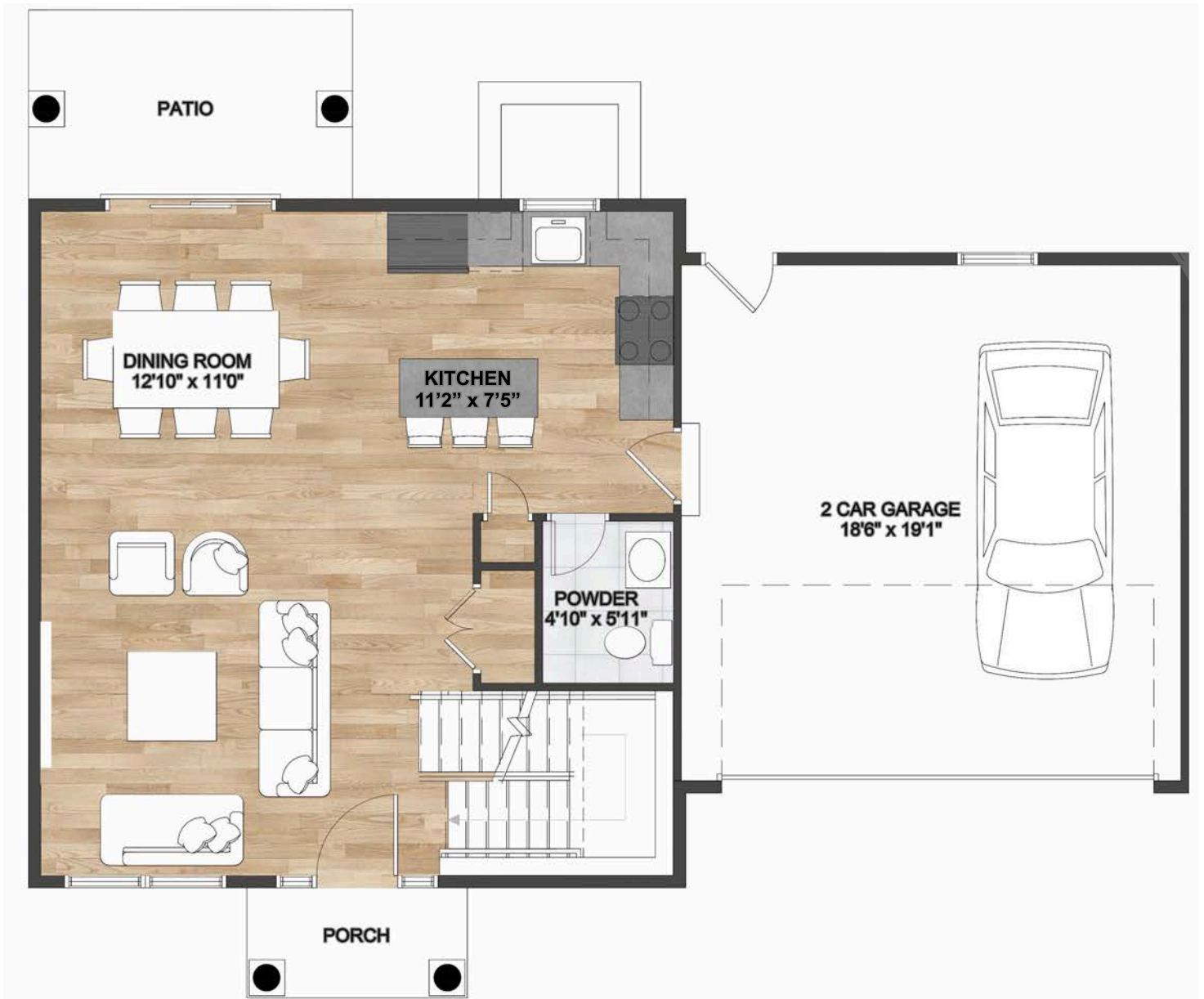


\*Floor plans are conceptual and for marketing purposes only. Dimensions and details are approximate and subject to change without notice. This property is being developed by RMS 91 Hope Street LLC. An affiliate of RMS 91 Hope Street LLC, RMS Real Estate Group LLC, is a licensed real estate broker. Equal Housing Opportunity. 🏠

4 Bedroom, 3.5 Bath

# Duplex • First Floor Plan

91 Hope



Approximately 2,000SF + 620SF finished Lower Level  
(not including garage)

\*Floor plans are conceptual and for marketing purposes only. Dimensions and details are approximate and subject to change without notice.  
This property is being developed by RMS 91 Hope Street LLC. An affiliate of RMS 91 Hope Street LLC, RMS Real Estate Group LLC, is a licensed real estate broker. Equal Housing Opportunity. 🏠

4 Bedroom, 3.5 Bath

# Duplex • Second Floor Plan

91 Hope



Approximately 2,000SF + 620SF finished Lower Level  
(not including garage)

\*Floor plans are conceptual and for marketing purposes only. Dimensions and details are approximate and subject to change without notice.  
This property is being developed by RMS 91 Hope Street LLC. An affiliate of RMS 91 Hope Street LLC, RMS Real Estate Group LLC, is a licensed real estate broker. Equal Housing Opportunity. 🏠

4 Bedroom, 3.5 Bath

# Duplex • Third Floor Plan

91 Hope



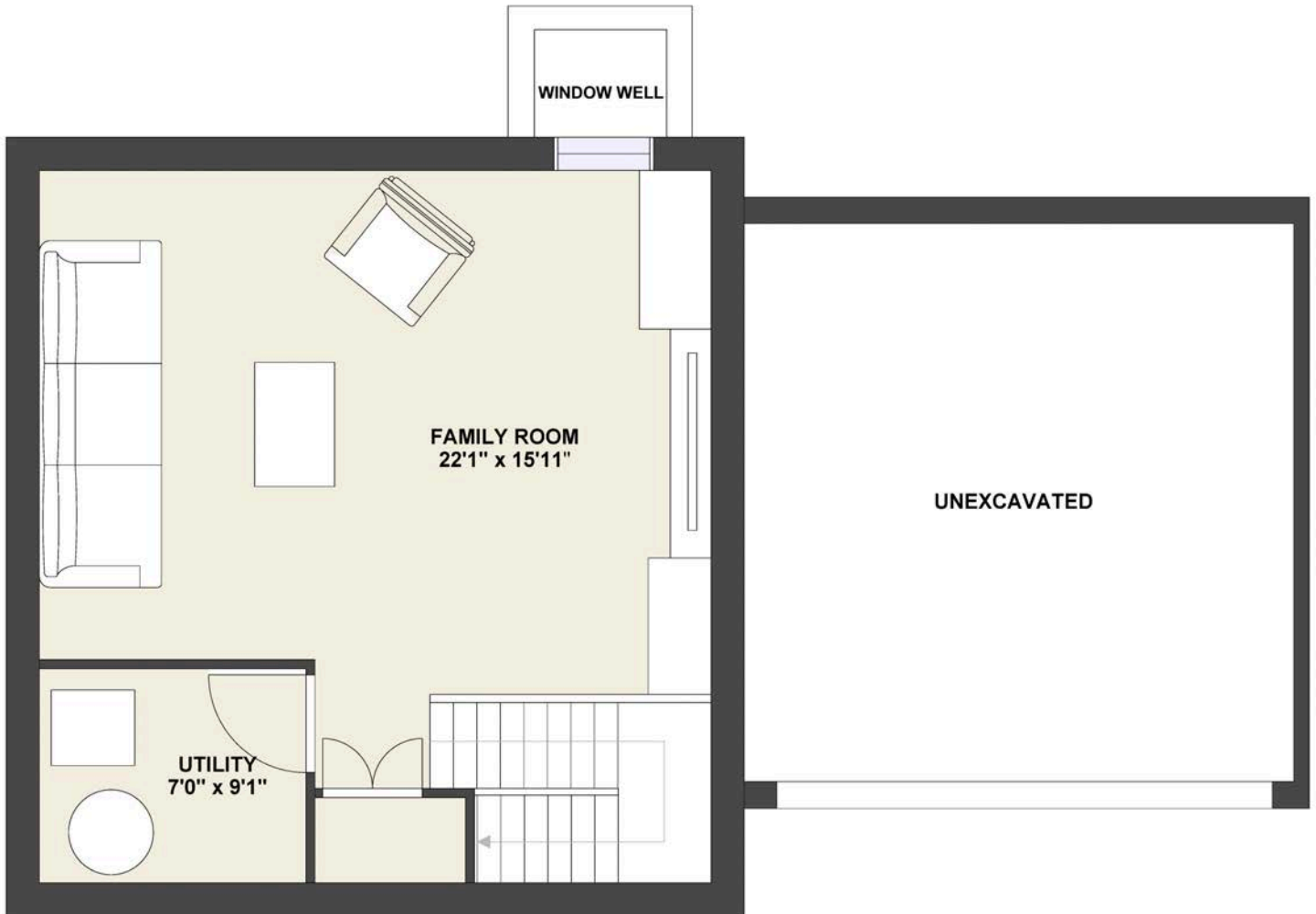
Approximately 2,000SF + 620SF finished Lower Level  
(not including garage)

\*Floor plans are conceptual and for marketing purposes only. Dimensions and details are approximate and subject to change without notice.  
This property is being developed by RMS 91 Hope Street LLC. An affiliate of RMS 91 Hope Street LLC, RMS Real Estate Group LLC, is a licensed real estate broker. Equal Housing Opportunity. 

4 Bedroom, 3.5 Bath

# Duplex • Lower Level Plan

91 Hope



Approximately at 2,000SF + 620SF finished Lower Level  
(not including garage)

\*Floor plans are conceptual and for marketing purposes only. Dimensions and details are approximate and subject to change without notice.  
This property is being developed by RMS 91 Hope Street LLC. An affiliate of RMS 91 Hope Street LLC, RMS Real Estate Group LLC, is a licensed real estate broker. Equal Housing Opportunity. 🏠

# Duplex Specifications

91 Hope

## Flooring

- Engineered Hardwood flooring on entire first floor and second floor hallway
- Carpet in bedrooms
- LVT flooring in lower level

## Kitchen

### *Cabinetry*

- Fabuwood cabinetry in Galaxy Frost

### *Cabinetry Hardware*

- Polished chrome pulls

### *Countertops*

- Quartz

### *Plumbing Fixtures*

- Sink: Kohler stainless steel undermount sink
- Faucet: Sterling Traverse 34462- CP pull down in chrome

### *Backsplash Tile*

- Irregular gray subway tile

## Laundry

- Electrical and Plumbing connections for side-by-side electric washer and dryer
- Washer + Dryer available at an extra cost through RMS

## Appliances

- Refrigerator: GWE19JYLFS
- Range: GE GRF 400SVSS
- Dishwasher: GDT650SYVFS
- Microwave: GE JVM3160RFSS

## Interior Paint

- Walls: Benjamin Moore Calm OC-22 Flat
- Ceiling: Benjamin Moore White OC-151 Flat
- Trim: Benjamin Moore Calm OC-22 Semi Gloss

## Bathrooms

### *Cabinetry*

- Fabuwood cabinetry in Galaxy Nickel

### *Countertops*

- Quartz

### *Plumbing Fixtures*

- Sink: Kohler Caxton K-20000-0 undermount sink
- Faucet: Kohler K-27416
- Shower Trim: Kohler K-TS27420-4G-CP
- Toilet: Kohler Wellworth elongated toilet bowl
- Tub: Kohler Alcove Tub K-26108-RA-O (bath 2+3)

### *Tile*

- Floor: 2" hexagonal mosaic tile (primary bath)
- Shower Wall: Irregular white subway tile (primary bath)
- Shower Floor: 2" hexagonal mosaic tile (primary bath)
- Shower Ceiling: Irregular white subway tile (primary bath)
- Floor: White matte penny round tile (bath 2+3)
- Shower Wall: White glossy penny round (bath 2+3)

### *Accessories*

- Tissue holder: Kohler K27429CP
- Towel Ring: Kohler K27428CP
- Towel Bar: Kohler K27426CP

### *Light Fixtures*

- Sculptural Globe Sconce

## Powder Room

### *Plumbing Fixtures*

- Faucet: Kohler K-27416
- Pedestal Sink: Kohler Veer Pedestal Sink
- Toilet: Kohler Wellworth Elongated Toilet

### *Accessories*

- Tissue Holder: Kohler K27429CP
- Towel Ring: Kohler K27428CP

### *Light Fixture*

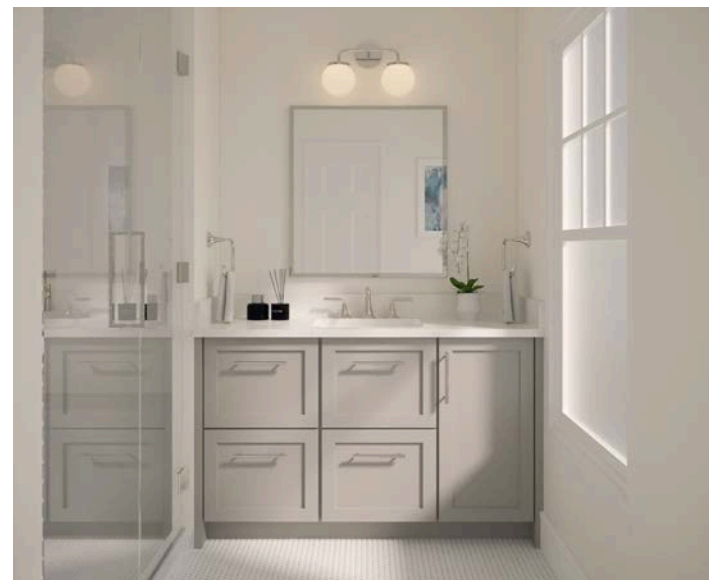
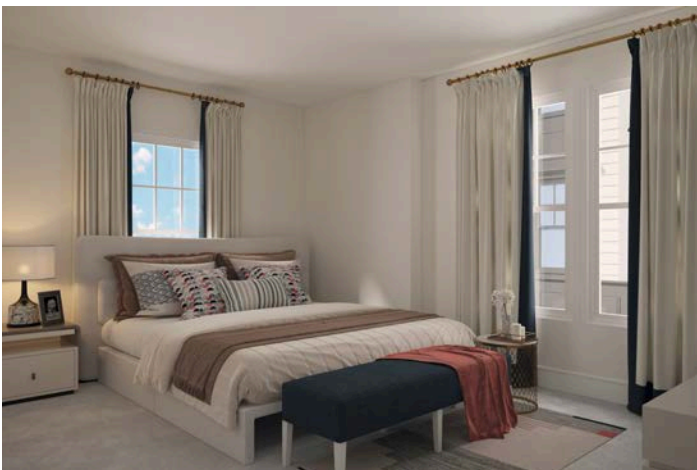
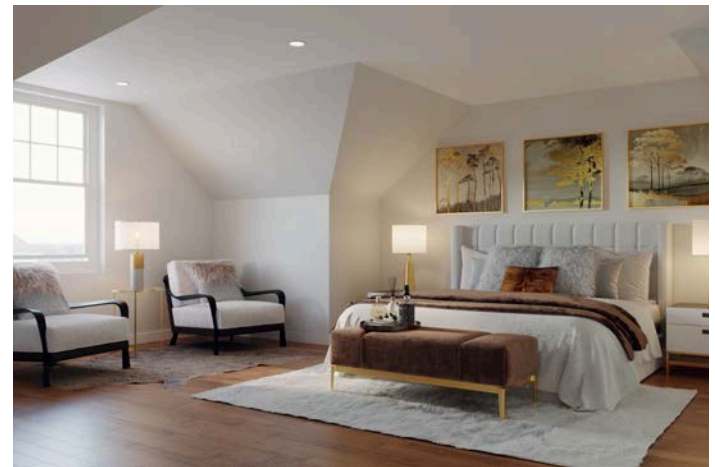
- Sculptural Globe Sconce

\*Floor plans are conceptual and for marketing purposes only. Dimensions and details are approximate and subject to change without notice.

This property is being developed by RMS 91 Hope Street LLC. An affiliate of RMS 91 Hope Street LLC, RMS Real Estate Group LLC, is a licensed real estate broker. Equal Housing Opportunity. 🏠

# Townhome Interiors

91 Hope



\*Floor plans are conceptual and for marketing purposes only. Dimensions and details are approximate and subject to change without notice. This property is being developed by RMS 91 Hope Street LLC. An affiliate of RMS 91 Hope Street LLC, RMS Real Estate Group LLC, is a licensed real estate broker. Equal Housing Opportunity. 🏠

3 Bedroom, 3.5 Bath

# Townhome • First Floor Plan

91 Hope

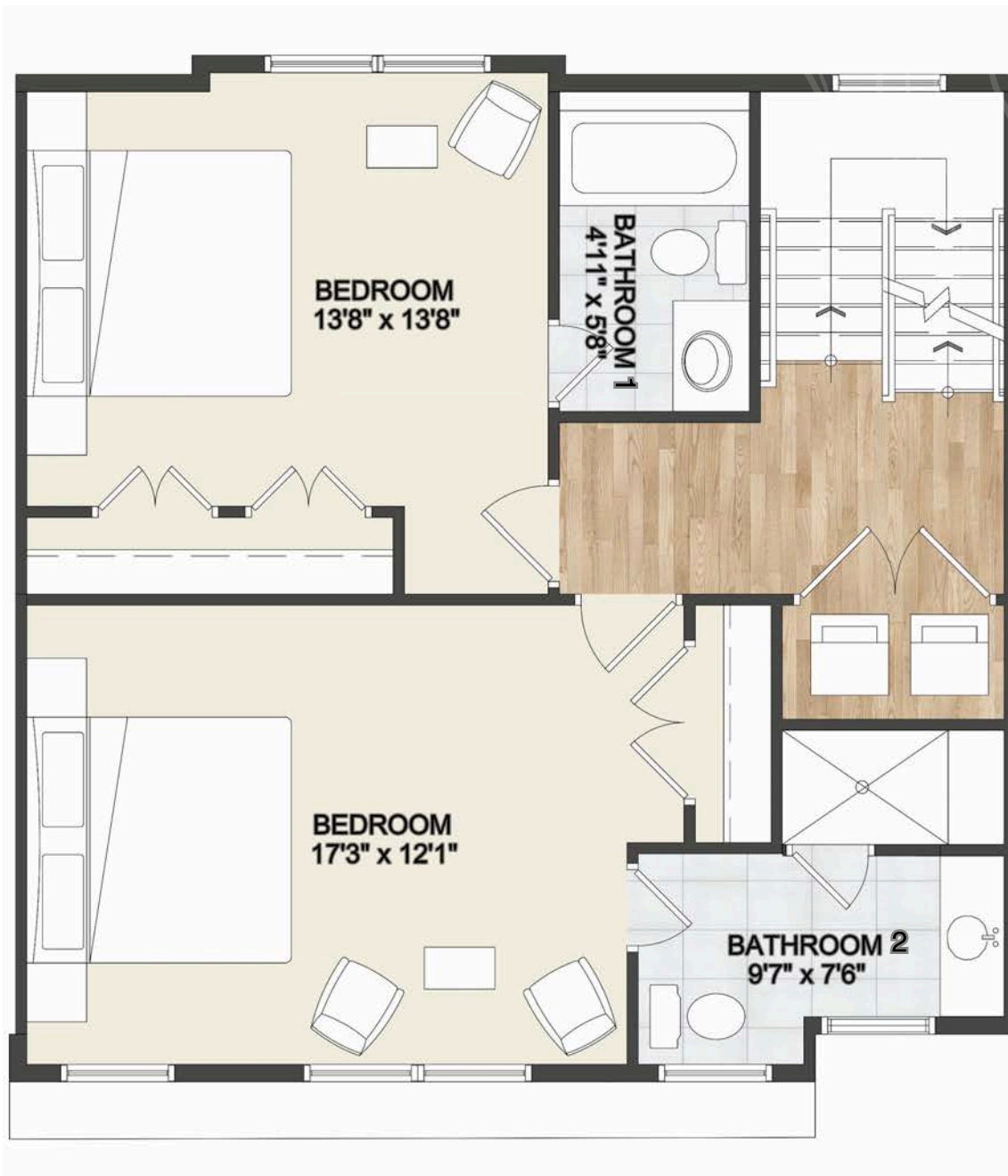


Approximately 1,925SF  
(not including garage)

\*Floor plans are conceptual and for marketing purposes only. Dimensions and details are approximate and subject to change without notice.  
This property is being developed by RMS 91 Hope Street LLC. An affiliate of RMS 91 Hope Street LLC, RMS Real Estate Group LLC, is a licensed real estate broker. Equal Housing Opportunity. 🏠

3 Bedroom, 3.5 Bath

# Townhome • Second Floor Plan 91 Hope



Approximately 1,925SF  
(not including garage)

\*Floor plans are conceptual and for marketing purposes only. Dimensions and details are approximate and subject to change without notice.  
This property is being developed by RMS 91 Hope Street LLC. An affiliate of RMS 91 Hope Street LLC, RMS Real Estate Group LLC, is a licensed real estate broker. Equal Housing Opportunity. 🏠

3 Bedroom, 3.5 Bath

# Townhome • Third Floor Plan

91<sup>Hope</sup>

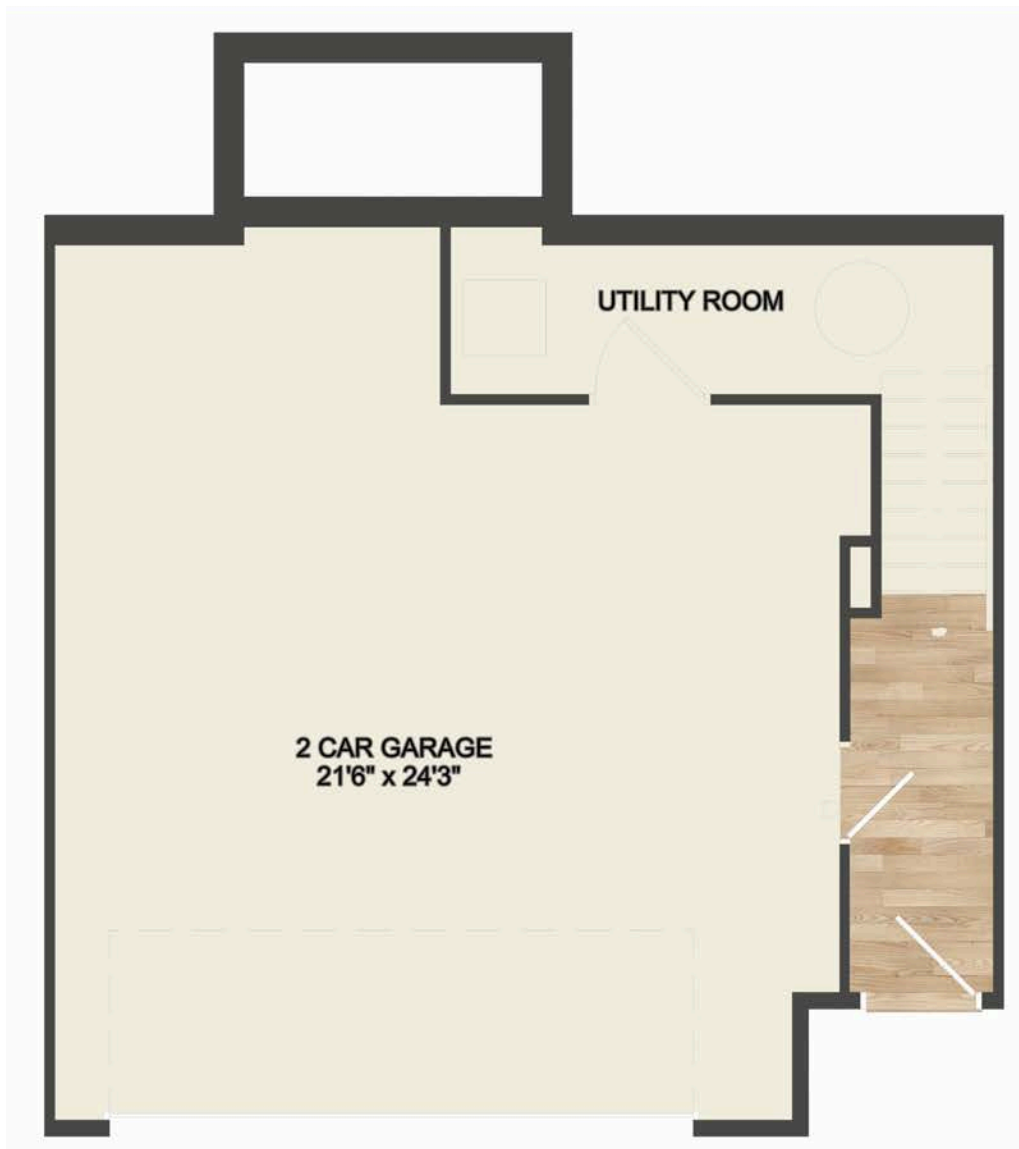


Approximately 1,925SF  
(not including garage)

\*Floor plans are conceptual and for marketing purposes only. Dimensions and details are approximate and subject to change without notice.  
This property is being developed by RMS 91 Hope Street LLC. An affiliate of RMS 91 Hope Street LLC, RMS Real Estate Group LLC, is a licensed real estate broker. Equal Housing Opportunity. 

3 Bedroom, 3.5 Bath

# Townhome • Garage Floor Plan 91<sup>Hope</sup>



Approximately 1,925SF  
(not including garage)

\*Floor plans are conceptual and for marketing purposes only. Dimensions and details are approximate and subject to change without notice.  
This property is being developed by RMS 91 Hope Street LLC. An affiliate of RMS 91 Hope Street LLC, RMS Real Estate Group LLC, is a licensed real estate broker. Equal Housing Opportunity. 🏠

# Townhome Specifications

91 Hope

## Flooring

- Engineered Hardwood flooring on entire first floor and second floor hallway
- Textured carpet with padding, color Parchment in the bedrooms

## Kitchen

### *Cabinetry*

- Fabuwood cabinetry in Galaxy Frost

### *Cabinetry Hardware*

- Polished chrome pulls

### *Countertops*

- Quartz

### *Plumbing Fixtures*

- Sink: Kohler stainless steel undermount sink
- Faucet: Sterling Traverse 34462- CP pull down in chrome

### *Backsplash Tile*

- Irregular gray subway tile

## Laundry

- Electrical and Plumbing connections for side-by-side electric washer and dryer
- Washer + Dryer available at an extra cost through RMS

## Appliances

- Refrigerator: GWE19JYLFS
- Range: GE GRF 400SVSS
- Dishwasher: GDT650SYVFS
- Microwave: GE JVM3160RFSS

## Interior Paint

- Walls: Benjamin Moore Calm OC-22 - Flat
- Ceiling: Benjamin Moore White OC-151 - Flat
- Trim: Benjamin Moore Calm OC-22 - Semi Gloss

## Bathrooms

### *Cabinetry*

- Fabuwood cabinetry in Galaxy Nickel

### *Countertops*

- Quartz

### *Plumbing Fixtures*

- Sink: Kohler Caxton K-20000-0 undermount sink
- Faucet: Kohler K-27416
- Shower Trim: Kohler K-TS27420-4G-CP
- Toilet: Kohler Wellworth elongated toilet bowl
- Tub: Kohler Alcove tub K-26108 (bath 1)

### *Tile (Bathroom 2 + 3)*

- Floor: White matte penny round
- Shower Wall: White glossy penny round

### *Tile (Bathroom Primary)*

- Floor: Mosaic hexagonal tile
- Shower Wall: White irregular subway tile

### *Accessories*

- Tissue holder: Kohler K27429CP
- Towel Ring: Kohler K27428CP
- Towel Bar: Kohler K27426CP

### *Light Fixtures*

- Sculptural Globe Sconce

## Powder Room

### *Plumbing Fixtures*

- Faucet: Kohler K-27416
- Pedestal Sink: Kohler Veer Pedestal Sink
- Toilet: Kohler Wellworth Elongated Toilet


### *Accessories*

- Tissue holder: Kohler K27429CP
- Towel Ring: Kohler K27428CP

### *Light Fixture*

- Sculptural Globe Sconce

\*Floor plans are conceptual and for marketing purposes only. Dimensions and details are approximate and subject to change without notice.


This property is being developed by RMS 91 Hope Street LLC. An affiliate of RMS 91 Hope Street LLC, RMS Real Estate Group LLC, is a licensed real estate broker. Equal Housing Opportunity. 



# 91 Hope

[91Hope@rms-companies.com](mailto:91Hope@rms-companies.com) | [91HopeStamford.com](http://91HopeStamford.com)

91 HOPE STREET • STAMFORD, CT



Floor plans are conceptual and for marketing purposes only. Dimensions and details are approximate and subject to change without notice.  
This property is being developed by RMS 91 Hope Street LLC. An affiliate of RMS 91 Hope Street LLC, RMS Real Estate Group LLC, is a licensed real estate broker.  
Equal Housing Opportunity. 